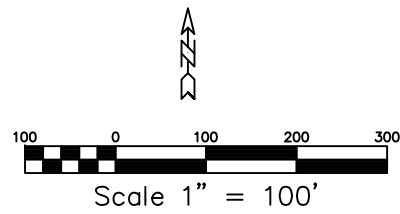


VICINITY MAP
-NTS-



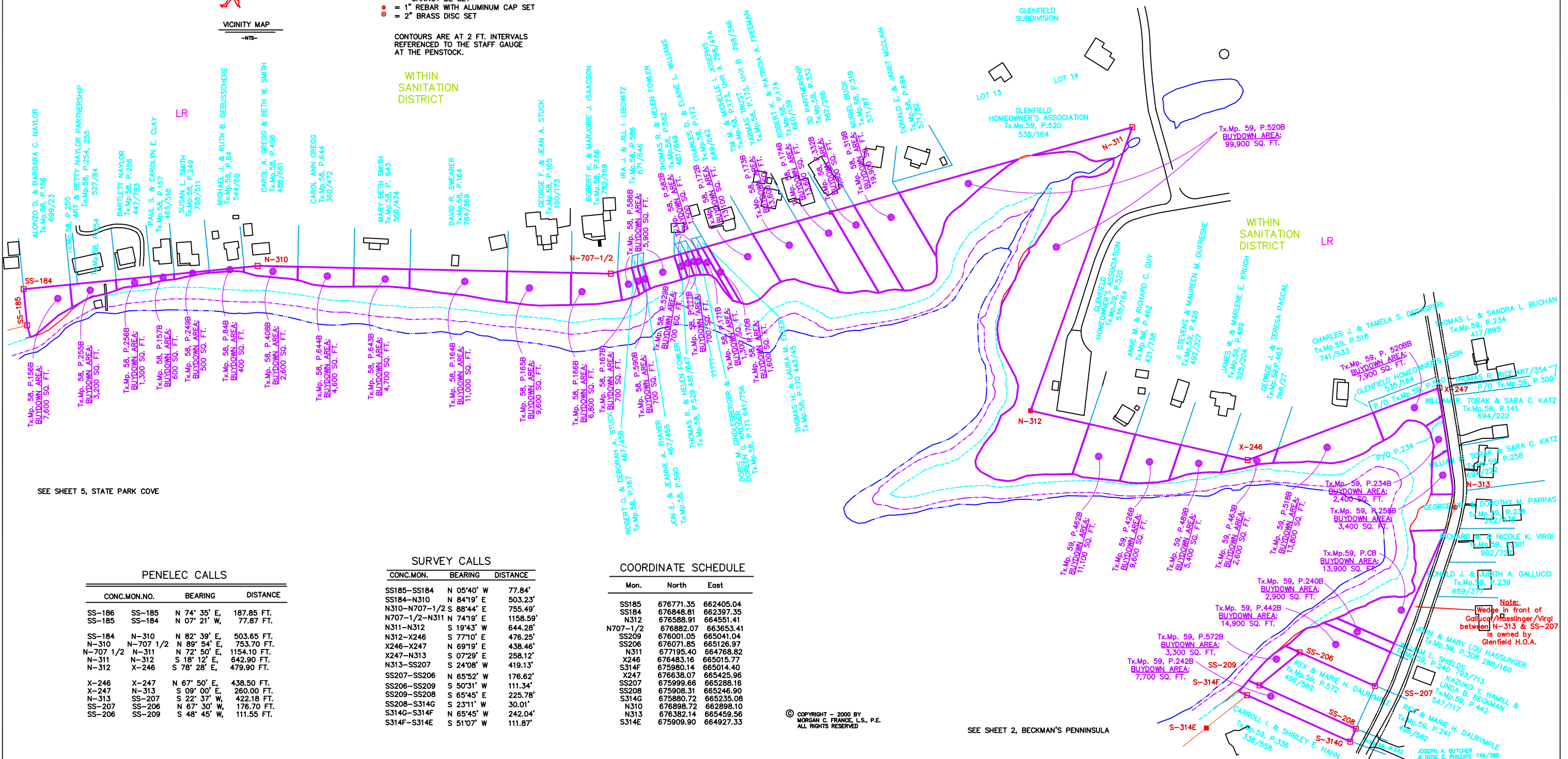
LEGEND

- = CONCRETE MONUMENT SET
- = CONCRETE MONUMENT FOUND
- = MONUMENT LINE
- = 2466 CONTOUR LINE
- = 2462 CONTOUR LINE
- = 25 FT. SAFETY LINE
- = BUYDOWN AREAS
- LR = LAKE RESIDENTIAL
- TC = TOWN CENTER
- TR = TOWN RESIDENTIAL
- ◆ = MONUMENT TO BE SET
- ◆ = CALCULATED MONUMENT LOCATIONS THAT CANNOT BE SET
- = 1" REBAR WITH ALUMINUM CAP SET
- = 2" BRASS DISC SET

CONTOURS ARE AT 2 FT. INTERVALS REFERENCED TO THE STAFF GAUGE AT THE PENSTOCK.

DEEP CREEK LAKE SURVEY DATA

1. **HORIZONTAL DATUM**
 HORIZONTAL DATUM = LAMBERT NAD 83 DATUM
 NAD 83 DATUM = FIELD OBSERVATION X COMBINED SCALE FACTOR
 COMBINED SCALE FACTOR = GRID SCALE FACTOR X ELEVATION SCALE FACTOR
 APPROXIMATE COMBINED SCALE FACTOR = 0.99989
2. **VERTICAL DATUM**
 VERTICAL DATUM = LAKE DATUM
 LAKE DATUM = NAVD 88 DATUM - 1.80 FT.



SEE SHEET 5, STATE PARK COVE

SEE SHEET 2, BECKMAN'S PENINSULA

PENELEC CALLS

CONC.MON.NO.	BEARING	DISTANCE
SS-186	SS-185 N 74° 35' E,	187.85 FT.
SS-185	SS-184 N 07° 21' W,	77.87 FT.
SS-184	N-310 N 82° 39' E,	503.65 FT.
N-310	N-707 1/2 N 89° 54' E,	753.70 FT.
N-707 1/2	N-311 N 72° 50' E,	1154.10 FT.
N-311	N-312 S 18° 12' E,	642.90 FT.
N-312	X-246 S 78° 28' E,	479.90 FT.
X-246	X-247 N 67° 50' E,	438.50 FT.
X-247	N-313 S 09° 00' E,	260.00 FT.
N-313	SS-207 S 22° 37' W,	422.18 FT.
SS-207	SS-206 N 67° 30' W,	176.70 FT.
SS-206	SS-209 S 48° 45' W,	111.55 FT.

SURVEY CALLS

CONC.MON.	BEARING	DISTANCE
SS185-SS184	N 05°40' W	77.84'
SS184-N310	N 84°19' E	503.23'
N310-N707-1/2	S 88°44' E	755.49'
N707-1/2-N311	N 74°19' E	1158.59'
N311-N312	S 19°43' W	644.28'
N312-X246	S 77°10' E	476.25'
X246-X247	N 69°19' E	438.46'
X247-N313	S 07°29' E	258.12'
N313-SS207	S 24°08' W	419.13'
SS207-SS206	N 65°52' W	176.62'
SS206-SS209	S 50°31' W	111.34'
SS209-SS208	S 65°45' E	225.78'
SS208-SS146	S 23°11' W	30.01'
S3146-S314F	N 65°45' W	242.04'
S314F-S314E	S 51°07' W	111.87'

COORDINATE SCHEDULE

Mon.	North	East
SS185	676771.35	662405.04
SS184	676848.81	662397.35
N312	676588.91	664551.41
N707-1/2	676882.07	663653.41
SS209	676001.05	665041.04
SS206	676071.85	665126.97
N311	677195.40	664768.82
X246	676483.16	665015.77
S314F	675980.14	665014.40
X247	676638.07	665425.96
SS207	675999.66	665288.16
SS208	675908.31	665246.90
S314G	675880.72	665235.08
N310	676898.72	662898.10
N313	676382.14	665459.56
S314E	675909.90	664927.33

© COPYRIGHT - 2000 BY MORGAN C. FRANCE L.S., P.E. ALL RIGHTS RESERVED

DRAWN BY: SUSAN N. EVANS PERANDO and MARGARET A. JORDAN
 DWG: BCKMNI
 123\C\DATA\EP\PROJECTS\DCL2000\BCKMNI

APPROVED BY: MORGAN C. FRANCE
 PROJ. NO.
 Plot date: 6/27/00 at 2:10
 REVISIONS
 7/04/00 1/03/01
 11/03/00
 11/10/00

Prepared For:
 DEPT. OF GEN. SERVICES - REAL ESTATE
 STATE OF MARYLAND
 300 West Preston Street, Room 601
 Baltimore, Maryland 21201

Prepared By:
 MORGAN C. FRANCE, L.S., P.E.
 10 North Third Street
 Oakland, Maryland 21550
 (301) 334-2305

PROJECT
 DEEP CREEK PROJECT
 BUY DOWN SURVEY

SHT. NAME
 DRAWING 1, BECKMAN'S
 PENINSULA

SHT. NO.
 1